



Britain

OMEX CALMAX

% 21.75 CaO

Goodbye Calcium Deficiency



Introduction :-

A liquid foliar fertilizer that contains high concentrations of soluble calcium and nitrogen, in addition to a group of trace elements in the form of chelates and chloride-free.

Calmax is the best for treating the symptoms of calcium deficiency and to prevent its appearance on the plant.

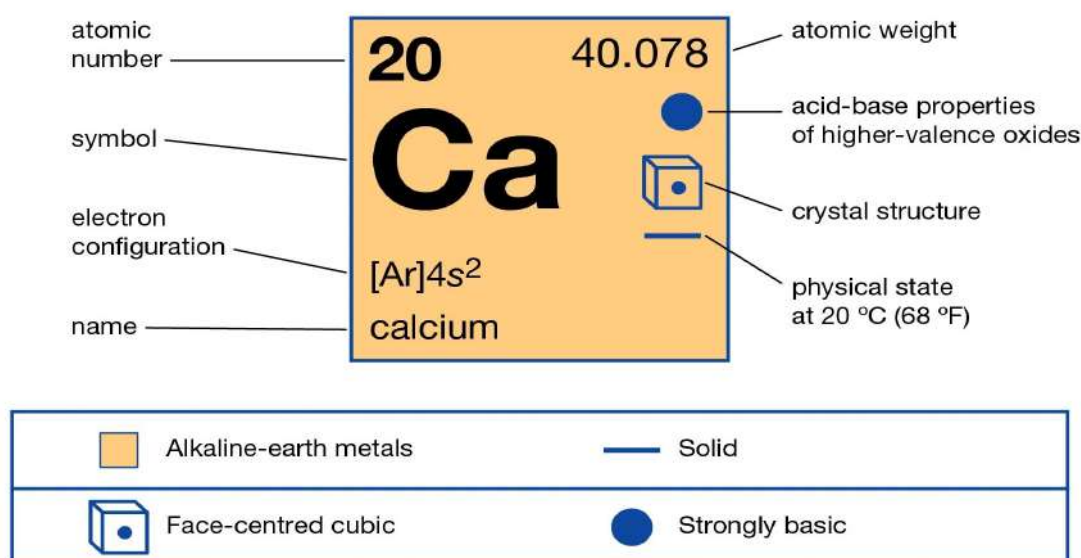
It also contains a proportion of magnesium necessary in the process of photosynthesis and the formation of sugars and vitamins, and a tonic for many enzymes that are used in the metabolism of carbohydrates.

Omex Calmax is used by foliar spraying on the plant or by ground fertilization with irrigation water.

Why Omex CalMax:-

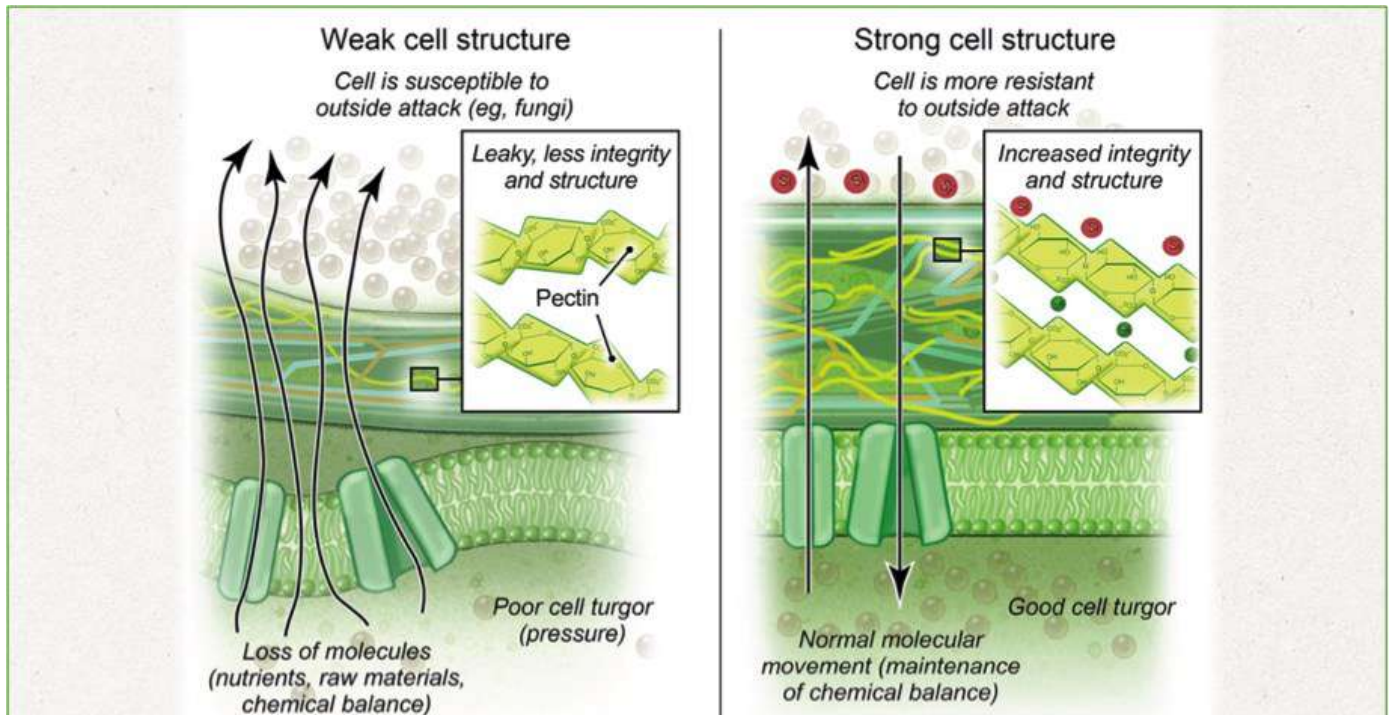


Omex Calmax is one of the best foliar fertilizers ever, due to the secret of the unique composition of the carrier material of the English Omex company, which makes Calmax contain a high concentration of calcium in a stable formula close to solid fertilizers that make it in the form of foliar and ground fertilizer 100% dissolved in water, subject to Rigorous quality control checks at every step of the manufacturing process.



Calcium Role In The Plant :-

- 1) An essential element for building the cell wall and necessary for the process of cell division.
- 2) Calcium is necessary for the process of balancing potassium and sodium elements inside the plant.
- 3) Regulating the acidity of cells.
- 4) It neutralizes the negative effects of alkaline salts and organic acids in the plant.
- 5) It treats the physiological imbalance of plant roots as a result of the concentration of salts in the soil, in which the roots lose their ability to absorb nutrients.
- 6) Increasing plant resistance to fungal diseases, insect infestations and volatile weather conditions by strengthening the plant cell wall.
Increasing the quality and hardness of fruits and thus the ability to store for a longer period while maintaining their vitality
- 7) It plays an important role in the safety of pollen growth and the growth of nitrogen-fixing bacterial root nodules.
- 8) Hardening the stem and leaves and increasing the plant's ability to resist volatile weather conditions.
- 9) Increasing the size of the root system, raising its ability to resist drought, and improving the absorption of nutrients.



Symptoms of calcium deficiency:

Calcium is an immobile element, so the symptoms of its deficiency appear on the growing tops and new leaves, such as wrinkles and deformations, and the smaller size of the leaves than the normal size.

And because it is important for new growth, its deficiency leads to reduced growth and the burning and death of the developing ends of the leaves.

The pink end rot of fruits, especially tomatoes, peppers and grains, and deforms the general shape of the fruits.

The phenomenon of twisted fruit, especially in cucumber.

Physiological disease bitter pit in apples.

The appearance of brown spots on apple fruits.

Decrease the fruit-set percent in citrus.

Composition :-

Calcium Calcium Nitrate	Nitrogen Total	Nitrogen Nitrate	Nitrogen Ammonium	Magnesium Magnesium Nitrate	chlorine	PH	Density
% CaO	% N	% NO ₃	% NH ₃	% MgO	Cl	PH	18°
21.75	14.25	13.50	0.75	2.25	2>	5.5 : 6.5	1.5

Symptoms of calcium deficiency in crops



Citrus



Tomato



Cucumber

Symptoms of calcium deficiency in crops



Onion



Potato



Pepper



Strawberry



Wheat



How to use and Dosage :-

CROP	CONDITION CONTROLLED	RATE l/ha	RATE ml/100l	APPLICATION DETAILS
Apples	Bitter pit	3.5 – 5.0	350 – 500	5-7 applications starting at the first signs of growth. Combine with cover sprays
Avocados	Pulp spot	4.0 – 8.5	400 – 850	Multiple applications
Broccoli	Brown head	3.5 – 5.0	350 – 500	4-6 applications starting shortly before head formation
Brussels Sprouts	Internal browning	4.0-8.5	400 – 850	Multiple applications
Cabbage, Cauliflower, Lettuce, Endive	Tip burn	3.5 – 5.0	350 – 500	4-6 applications starting shortly before head formation
Celery, Chicory	Black heart	3.5 – 5.0	350 – 500	Weekly applications starting before black heart symptoms arise
Cherries, Plums	Cracking	3.5 – 6.0	350 – 600	3-4 applications starting 6-8 weeks before harvest
Chinese Cabbage	Tip burn	2.5 – 5.0	250 – 500	2-4 applications per season
Cotton	Square shedding	6.0	600	3 applications between 5-7 leaf stage and flowering
Cucumbers, Melons, Peppers, Tomatoes	Blossom end rot	1.5 – 3.5	150 – 350	6-12 applications during periods of heat stress
Grapes	Reduction of stem dieback and shot berry	5.0 – 10.0	500 – 1000	3-4 applications from beginning of berry softening to maturity
Table Grapes	Improved fruit finish and storability	5.0 – 6.0	500 – 600	3-4 applications from beginning of berry softening to maturity
Kiwi	Blossom end rot	4.0 – 8.5	400 – 850	Multiple applications
Ornamentals	Improved vase life	2.5	250	Weekly applications
Peaches, Nectarines	Improved fruit firmness	3.5 – 5.0	350 – 500	4-5 treatments from fruit-set
Potatoes	Internal brown spot	2.5 – 5.0	350 – 500	Multiple applications during periods of heat stress
Pears	Superficial scald	4.0 – 8.5	400 – 850	Multiple applications
Strawberries and other berries	Increased fruit firmness	3.0	300	3 applications in conjunction with last pre-harvest pesticide sprays

Recommendation for use :-

- The use of calcium spray on the leaves ensures the rapid absorption of the element through the leaves of the plant, as calcium is one of the non-moving elements in the plant, so it is preferable to use spraying with ground fertilization than other types of calcium.
- Recommended to mix the dose with an amount of 500-1500 liters / ha
- It can be mixed with most fertilizers and pesticides, and it should not be mixed with phosphate fertilizers. A mini experiment should be done before mixing .
- When using CalMax alone, it is necessary to add an adhesive and a spreader.
- Avoid spraying when the heat intensifies or during times of intense sunshine.

Packing :-

Omex CalMax Available in 5 Liter Gallon