

Agroleaf Power

High Nitrogen



The magic solution
for vegetative growth weakness of plants

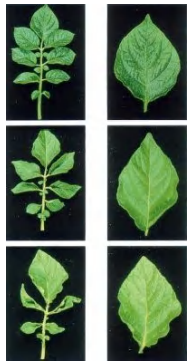


Definition :

- A high-nitrogen foliar fertilizer that is used as a spray to treat nitrogen deficiency and increase the vegetative growth , increasing the protein content and giving a healthy plant with high efficiency .
- It contains a high concentration of nitrogen to stimulate vegetative growth and the growth of buds and branches .
- Used in periods of stress when the plant needs additional vegetative growth and it is always the right solution after getting out of bad weather .

Nitrogen Deficiency

Cucumber Crop



N-def-Potatoes



N-def-Lettuce



N-def-Strawberry

Tomatoes Crop



N-def-tomatoes



N-def-Wheat



N-def-Cucumber

Wheat Crop



N-def-Citrus



N-def-Grapes



Composition % :

N Total	NO ₃	NH ₂	P ₂ O ₅	K ₂ O	Fe DTPA	Mn EDTA	B	Cu EDTA	Mo	Zn EDTA
31	1	30	11	11	0.14	0.07	0.03	0.07	0.001	0.07

Modern technologies in Agroleaf :-

Agroleaf group is a unique foliar fertilizer in the Saudi market, as it contains new and distinct techniques that increase the rate of absorption of nutrients by plant cells and increase their utilization as follows:



It is the dual stimulation technology where this technology works to stimulate the plant to increase the rate of photosynthesis, in which the plant produces sugars using light, carbon dioxide and water and this is done by increasing transpiration rates and increasing the building of chlorophyll. Carbon dioxide by improving the transpiration process. Research also showed an increase in the percentage of chlorophyll formation in the treated leaves and an increase in leaf weight and size.



It is an innovative, patented plant stimulator that is a mixture of compounds that enhance the delivery of spray solution molecules to the leaves and plant cells, thus faster absorption, which leads to a better yield and higher productivity.

This mixture consists of the following :

- 1- Vitamins that improve the metabolic activity of the tissues absorbing the spray solution.
- 2- Stress-reducing compounds that enhance plant tolerance to conditions unsuitable for growth.
- 3- Compounds that improve the work of the chelates and thus raise the rate of absorption of the elements by plant cells

How to use :-

General use:

Dose is 3 : 5 Kg / 1000 L for 2: 3 application every 2 weeks



Greenhouses :

Use it in greenhouses at the vegetative growth stage , you need to add the next mentioned doses to get the optimal growth .

Cucumber :-

Use at 3 : 5 Kg/1000 L after 6:10 days of transplanting and repeat 1 : 2 times every 10 days until flowering stage .

Tomatoes , Pepper , Eggplants :-

Use after 6 days of transplanting and repeat 3 : 4 times . You can increase the dose to 4 Kg/1000 L at the last application .



Outdoor Crops :

Spray after 25 days of germination in the case of planting by seeds , and after spraying Agroleaf high phosphorous.

- Spray a week after planting in case of planting by seedlings and after spraying Agroleaf 20 - 20 - 20 and Repeat once or twice as needed .

Watermelon , melon , squash , outdoor tomatoes :-

Start spray at dose 3 : 4 Kg/1000 L after 10 days of planting and after spray Agroleaf high phosphor then repeat every 10 days until flowering stage .

Potatoes :-

Spray from age 25 days until before the beginning of the tubers formation at 4 : 5 Kg/1000 L and repeat 2 : 3 times .

To build strong vegetative growth and increase protein percentage .



Fruit trees :

Use 3 : 5 Kg / 1000 L for strong vegetative and branching growth .



Fodder :

Use 3 : 4 Kg/1000 L after germination and after 10 : 15 days of Agroleaf high phosphor treatment .

Usage recommendations:

Mixing it in the tank is easy and cannot cause clogging of the equipment like other fertilizers. For mixing operations with other chemical elements, it is recommended to conduct a mini-experiment before using it on a large scale, by letting it go through a reaction period of two or three days. - Avoid spraying in bad conditions such as direct sunlight - high temperatures.

Packages:

Agroleaf Power High Nitrogen is available in 2 kg and 12 kg packages.